



Great progress on major residential development

In what is arguably the biggest residential development since the 1862 settlement of Paparoa, potentially sixty-plus new residents could soon be making Paparoa their home. With Resource Consent now granted Paparoa Community Charitable Trust is working to bring their subdivision plans to reality.

The Trusts' vision of providing retirement living on 14 new lots will give senior citizens an option to remain in their community among friends. The village will provide the security of near neighbours and the proximity of retail and other services. In a village atmosphere there will be opportunities for socialising and community activities.

A new road off Franklin Rd and new pedestrian linkages will be constructed to bring the village close to the retail area of Paparoa. The lots, ranging between 401m² and 896m², will allow for single story two-bedroom dwellings designed for senior living.

The Trust is presently formulating the rules around ownership and membership responsibilities for the village. It is intended that residents will build and own their own homes under criteria which will ensure a good standard of construction and maintenance. Waste water disposal and firefighting infrastructure will be owned communally.

The other aspect of the development

is the provision for 15 rural residential lots ranging up to 5000m² and capable of providing for a family dwelling and on-site waste water disposal. These lots will be for sale on the general market and will be subject to building covenants to ensure a good standard of construction and appearance. There will be easements to protect infrastructure such as stormwater assets.

Overall it will be a quality development which will provide a significant amenity for current and future residents.

The Trust is presently working through these provisions and will be able to promote the development more widely in the near future. There is a flyer of the Scheme Plan documents enclosed in this issue of The Press. It shows the general layout of both aspects of this development and may yet be subject to minor amendments.

Keep an eye out for more information in the Paparoa Press and other local publications as time goes by.

PCCT

Paparoa's 143rd A&P Show this weekend Saturday Feb 2



Paparoa Showgrounds

Entry: \$10 adults
\$5 children
(under 5yrs free)

Gates open 9am

Free Parking on grounds

- Side shows
- Kumarani Circus and workshops
- Equestrian events
- Wood chopping
- Shearing
- Team roping, barrel racing, pole bending
- Cattle and Dairy goat sections
- Huge Indoor Section - entries by Friday 11.45am
- Market stalls and Trade sites
- Live bands - good music
- Food and drink stalls
- Lots of attractions for children and teenagers
- Kids Country Challenge - awesome prizes! From 10-2pm with junior and senior fun challenges
- Kong the donkey
- Petting zoo
- Free sawdust dig for children under 7

Ready Relief Team supporting our community

The Plymouth Brethren Church are undertaking a major fund-raising initiative through their local and extended networks.

They have committed to assist the Medical Society in achieving their goal of renovating the old council building and providing the community with a new medical centre and library space.

A sausage sizzle with gourmet hamburgers will be held at Paparoa Farmers' Market on 9 February as the culmination of this fundraiser.

Come along and support them in this effort. Look out for the flier with more details coming soon to your mailbox.



A FUN DAY OUT FOR THE WHOLE FAMILY!

Paparooa Press PP

PUBLISHED MONTHLY BY

Progressive Paparooa Inc. (PPI),
for Paparooa, Pahi, Matakohe,
Whakapirau and Tinopai.

CIRCULATION 1,050

CONTACT US - SALLY TAYLOR, EDITOR

- press@paparooa.org.nz
- ph 09 431 7209
- PPI, PO Box 107, Paparooa 0543
- www.paparooa.org.nz

ADVERTISING

Rate Card available by email

Booking & Copy deadline:

15th of month

Publication date 1st of month

The movies - let's do it again, please!

Paparooa Hall was the venue for a thoroughly enjoyable evening at the screening of 'She Shears', a documentary film about five dedicated women who are passionate about sheep and shearing. Hazel Wood of Ruawai is one of the five.

The motivation behind organising the evenings was for interested rural people to have easy access to this wonderful film. It was also hoped to garner interest in the A&P shearing competition sponsored by ANZ Bank. The Northland Shearing Circuit competition involves Kaikohe, Northern Wairoa, North Kaipara, Warkworth, Franklin and Kumeu A&P shows. At least 130 people came along over the two evening showings to see what this movie night in Paparooa was all about. It was also great that so many current and one-time shearers came along.

The Hall Committee organised and facilitated the screenings and of course the most important aspect was to set up the large screen, projector and sound equipment run by Mike Poyner and Craig Rosser. Much appreciated were members of the Paparooa Lions Club who were there to help both nights. The Committee



were thrilled with the outcome and, with Mike's enthusiasm on board, it would be feasible to do this again. Much icecream and popcorn was consumed (as one does at the movies!) and the 'cuppa and biscuits completed a very social night out. It was all a great success and as a fundraiser for hall maintenance we thank everyone who supported us.

If there is a particularly good movie (or two) which you think we could try next, please let Robyn at Skelton's Drapery know.

Lorraine Rowlands, Hall Committee

SHEPPARD ELECTRICAL LTD

ELECTRICAL INSTALLATION
AND MAINTENANCE

Bill Sheppard
Electrician



021 975 618

OR
a/h 09 431 7196

YOUR TYRE SPECIALIST

Providing 60 years of service
in the heart of Kaipara.

- Tyres
- Brakes
- Wheel Balancing
- WOF
- Suspension
- Servicing
- Alignment
- Batteries

Garnetts Tyre Service

📍 2 Gorge Rd, Maungaturoto

☎ 09 431 8255

BRIDGESTONE TYRE CENTRE

Libby's Councillor corner

Exciting things are ahead this year for Kaipara District Council as we head into the last year of this term of elected Mayor and Councillors. Elections occur again in October

A decision about the Representation Review for Council wards will be made after hearings in March. Due to there being submissions opposed to our proposal of four wards for Kaipara district, the decision on the wards will be made by the Local Government Commission after the hearings.

As promised in the Long Term Plan, the District Plan, which covers the rules around what can be done in certain areas of the district, including where and how growth and development can occur, is being updated. The zoning of the different communities across Kaipara is one of the first aspects that will be reviewed. Unfortunately it is not a quick process but at least we have started and Council will be seeking your input over the year.

The government has a goal for New Zealand to be Smokefree by 2025. They expect that at least 95% of New Zealanders will be smokefree, which is currently around 85%, with variations across ages and ethnic groups. Northland has 19% smokers with Kaipara

slightly less at 17%, so we have a way to go to get to 5%. Councils are expected to have Smokefree policies as to where smoking can occur in public places. We already have smoke free parks, playgrounds, sports fields and swimming pools.

At our last Council meeting we debated what other areas this should include, such as beaches, outdoor dining areas, transport hubs, CBDs, and Council owned premises. On beaches cigarette butts are the number one litter item, aside from the issue of second hand smoke. The decision was to ban smoking in most of the above areas, but not on beaches at this stage. In outdoor dining areas it will be up to the management to decide the rules they put in place for their own premises.

Council's aim is to support the health and well-being of Kaipara's communities and visitors, by reducing the prevalence of smoking in Kaipara.

Libby Jones, 021 208 0093
Councillor Kaipara
District Council
Director Northland District
Health Board

PMS Building virtually gutted ... to make new

White cables for power, blue cables for data, red cables for fire alarms, grey pipes for plumbing, it's all going into the former council building to make it fit for purpose.



Brogan's builders on the job at the Medical Society's premises

Three or four different trades on site at any one time have made the building a hive of activity in what is almost a complete refit. Although hidden behind the new ceilings and walls the cables and pipes will create a modern efficient environment and workplace for Coast to Coast Health Care Ltd and Paparoa Community Library.

Medical Society chair, Graham Taylor said "It is very satisfying indeed seeing this project finally coming to fruition. I expect the public will be quite amazed at the finished result. Society members are working hard to ensure the final details fall into place with decisions around floor coverings, décor and fitments being made in conjunction with our tenants". Bank funding is in place to

complete the renovation, but additional funding is desired to reduce the short-term overdraft facility. Taylor said the Society was extremely grateful to the Plymouth Brethren Church for undertaking a major fund-raising initiative to assist the Society through their local and extended networks. The Ready Relief Team is holding a sausage sizzle at Paparoa Farmers' Market on 9 February to highlight their efforts. Donations can be IRD tax receipted and donors can receive 1/3 tax rebate. Please come along to support this worthwhile initiative.

At Press time the gib ceilings and wall linings were being installed to be followed by plastering, painting and floor coverings. The home stretch is in sight!

PMS

Lazy sunny afternoon picnic

The weather gods turned on another lovely day for the annual Paparoa Potluck Picnic on Sunday January 6th.

Everyone brought along something for the communal food sharing tables and were able to sample a wide variety of offerings.

Entertainment, provided by local band Swamp Brothers, treated us to some good old toe-tapping blues and rock'n roll.

Swamp Brothers bring together a long and interesting history from the NZ music industry. Members are Jed Town, Nigel Russell, Fred Renata, John Payne and David Perrett.

Thank you to all involved in the organisation of the day, including putting up and taking down of gazebos and for entertaining us - a great way to spend a sunny afternoon.



Swamp Brothers provided music all afternoon

Our NEW Library needs you!

Paparoa Library is getting closer to opening (see above) and you are needed!

Do you want to play an important part in making your library everything YOU want it to be?

- ◆ Would you like to be surrounded by books and be part of the team who will shape your local library?
- ◆ Are you vibrant, enthusiastic, love people and books?
- ◆ We need a volunteer manager, desk staff, and others to help with holiday programmes, and almost anything you can think of.
- ◆ Do you have basic computer skills and a willingness to learn new things? Training is provided.

Then consider offering your services today - just a little or a lot and you can help make a difference in our community.

Contact Debbie Blythen 021 145 5776
debbieblythen@gmail.com



PAPAROA FARMER'S MARKET

EVERY SATURDAY VILLAGE GREEN 9-12
EFPOS AVAILABLE
STALLHOLDERS CONTACT
RUTH 021 433 969
GOODLIFESOAP@GMAIL.COM

Bridge works progressing well

Bridge No.1 guardrails have been installed and the pavement construction crews are now driving over it to cross Parerau Creek. The orange machine excavator pictured is currently installing the roadside wire rope barriers. The decks of four of Bridge No.2's six spans have been poured and the steel works on the fifth span are complete. Guardrails like those on Bridge No.1 will be installed when deck works are completed. Anti-graffiti paint will be applied to both bridges.

Earthworks continue at the eastern (Paparoa) end and middle section of the realignment including through the limestone quarry. Across the project length 2.5km of roadway is to be built up with pavement construction.

Work at the western end of the realignment is almost completed. All that is needed is to tie-in to the existing state highway and form the new intersection leading into Matakoho township which is why vehicles are currently being diverted along Matakoho East Road. Children returning to Matakoho School after the holidays won't be used to the extra traffic on this road without footpaths so please take extra care and reduce your speed.

We're on track to open 1.2km of the new alignment to all vehicles in mid-February between the west end and the Ararua Road intersection (where Diversion 1 currently goes through just north of Anderson Bridge). The road surface will be stabilised with traffic on it



Bridge No.1 guardrails installed



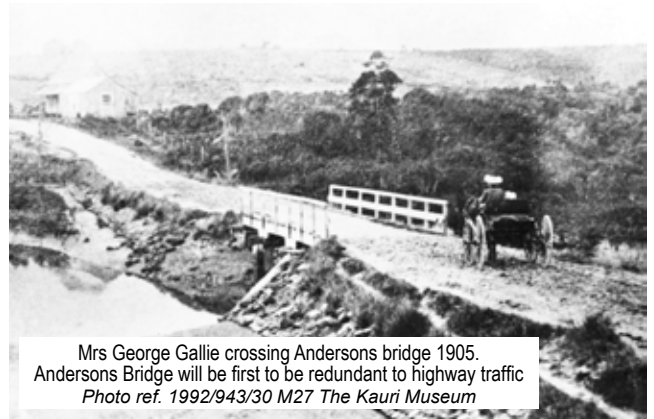
Bridge No.2 steelworks

and then the final chip seal will be laid, the speed limit will be 30 km/hr. Further information including a graphic will be distributed well before we make this traffic switch.

We've been making the most of mainly dry weather and the progress of works will always be dependent on continued good weather over summer and into autumn. Northland

the current SH12/Matakoho East Road intersection and the SH12/Ararua Road intersection are finished. We expect to start works on both these intersections in March 2019.

We continue to work closely with Kaipara District Council and Northland Regional Council in finalising the management plans and consents for these works.



Mrs George Gallie crossing Andersons bridge 1905. Andersons Bridge will be first to be redundant to highway traffic
Photo ref. 1992/943/30 M27 The Kauri Museum

We're holding a **Matakoho Bridges community day** 10am-2pm Saturday 9 March. We would love the Matakoho and wider communities to join us on site before Bridge No.2 is opened to vehicles in March. When details are finalised, we'll send an open invitation.

The traffic team put up speed restrictions only when required. The team thanks those who have been following the speed limits. Please continue to observe these speed limits to help keep everyone safe. Thank you for your continued interest in, and support of, the project. It is much appreciated by all involved in delivering the realignment of SH12 through Matakoho.

Contact Jenny Scott,
Liaison Manager,
Fulton Hogan Ltd

0800 900 007 or jenny.scott@fultonhogan.com if you have any queries or feedback regarding drone flyovers or any other aspects of the project

Keep up with progress and drone footage at: www.nzta.govt.nz/projects/connecting-northland/matakoho-bridges

Jenny Scott



Bridge No.2 looks impressive stretching across the river



LATTO

BUILDERS

021 7727 66

House Construction, Alterations
Renovations or General Repairs



TINOPAI PLASTERERS

WE GUARANTEE THE HIGHEST QUALITY FINISH



35 Years experience in...

- GIB Stopping
- Fibrous Plastering

for FREE quote, call us now!
Trevor 021 0300 073

Northland Circus Festival

Circus Kumarani has been a part of Dargaville for 13 years. Over the last few summers they have taken their circus festival to different parts of Kaipara, and this year Paparoa was lucky to have them here at our showgrounds.

A weekend of workshops, with stalls catering for all ages, a free holiday programme for children, plus a spectacular show on Saturday night all went off well.

There is a strong network of circus performers and followers around the world. Many of the performers spend time travelling around the world attending festivals, teaching others and sharing and improving their skills.



The range of nationalities represented was evident at the show at Paparoa Hall on Saturday night with around 150 people from all over the world, including South Africa, France, Netherlands, United Kingdom, Germany, America, Australia and of course New Zealand.

The evening showcased a huge range of activities with world standard performances for the 150 people attending. Paparoa Hall was suitably decorated and hanging from the ceiling was both an aerial silk and trapeze, which were used by amazing entertainers throughout the night.

Other highlights included a fabulous hoops routine from Circus Kumarani locals Matt and Lisa from Dargaville. Other

performers demonstrated their skills in acrobatics, contortionist dance, diablo, pole dancing, hoops spinning from all parts of the body, the spoken word - word juggling, and later outside after dark some fire juggling.

Circus has many different aspects and Circus Kumarani works hard to bring it all together, including aerial, juggling, balance and musicians with a wide range of performances, so everyone can find an area of interest. The performers love sharing their skills and knowledge to help others learn to do things they didn't know they could. And we loved them sharing their talents with us.

(more photos back page)

PP

Camping cyclists on a mission

Cousins Rose Tait (nee Elley) from Upper Hutt and Raina Elley of Auckland recently stopped over at The Paparoa Camp on a personal mission to revisit former family land in Pahi road. Their Great grandfather Frank Bartrum Blackwell owned 'Karepo' farm from the 1880's to 1927.

A quick phone call to Pahi Road resident, Mary Stevens, ascertained that the farmland in question is now owned by Neil and Claire McInnes and so the sisters went off to explore.



Frank Blackwell was famous in New Zealand for his native plant photography which featured in the reference book 'Plants of New Zealand' by his sister Ellen Blackwell and Robert Laing, first published in 1906 by Whitcombe and Tombs. PP



4T-DIGGER – BOBCAT – TIP TRUCK

Property Maintenance – Driveways – Building Sites
Stump & Tree Removal – Hole Boring – Chain Trencher
Calf Shed and Stockyard Cleaning

KAIPARA – WHANGAREI – RODNEY

Phone Matt: 021 199 6677

Email: mprabrownecontractors@gmail.com



VALENTINES DAY DINNER
Enjoy the Romance of Italy!
With someone you love.

– To Share –

Freshly baked bread with Olive Oil & Smoked Salt

– Mains –

Sicilian Spagetti, rich red wine tomato sauce with pinenuts & topped with crunchy breadcrumbs & parmigiana

or

Risotto with Truffle oil, Portobello Mushroom & parmigiana

– Dessert –

Dark Chocolate Tart or fresh Strawberry Cheesecake

Three courses \$40

Delicious wine matches available and Espresso martinis to finish

Booking required.

• **PAPAROA HOTEL** •

www.paparoahotel.nz (09) 431 7359



Upgrades and more

Paparooa Primary School is having life breathed back into its decades old buildings. New aluminum framed windows and doors are replacing the old wooden ones, upgrades to one of its toilet blocks and a brand new entranceway.

Local builder Adam Stevens and his team have worked tirelessly over January to have the school ready for the 2019 school year.

The upgrades are further testament to the changes the school is making to better serve the children of the Paparooa community and that this is very timely given our growing roll. Paparooa Primary has never looked better. Stay tuned for more announcements as the year unfolds.

Simon Schuster
Principal, Paparooa Primary School



Paparooa Store

Proudly Supporting Paparooa

OPEN 7 DAYS

Monday-Saturday 7am-6pm

Sunday 9am-5pm



We stock a great selection of

CONFECTIONERY, ORGANIC, DELI, MEAT, FRUIT, VEGES, FROZEN GOODS, BEER, WINE and a wide range of grocery items at excellent prices

DVD's \$1 to \$8 per night

EFTPOS NZ HERALD POST CENTRE

Phone / Fax 431-7320

Cnr. Franklin Road and State Highway 12

Payroll seminar Are you ready for 1 April?

An amazing national payroll module has been allocated to Kaipara, and is coming to Dargaville on 26th of February.

Organised primarily by the Dairy Women's Network, everyone is welcome. This is a very important topic, especially with the IRD payday filing rules coming in on 1st April, and it's FREE, funded by New Zealand dairy farmers through DairyNZ.

- Identify ways to stay compliant and cut out hassles
- How and why to avoid common mistakes with payroll
- Ask questions/discuss issues you've experienced personally

- Follow best practice employment guidelines confidently

The date for Kaipara is:

Tues 26 Feb, 9.30- 12.30pm, Dargaville Town Hall

Is this workshop for you?

Anyone who employs staff, or plans to do so, is encouraged to come along for a practical refresher on the do's and don'ts of paying staff.

Register now at dwn.co.nz/events. DairyNZ and Paysauce want you to get it right.

Info supplied by Valeria Maw

New art exhibition from 1 Feb



White Rock Gallery is heading into 2019 with lots of optimism. After a very busy Christmas period we're now enjoying the influx of holiday makers that the Kauri Museum brings. We'd like to take this opportunity to thank the Kauri Museum for inviting us to use this awesome space, we're very grateful for the chance to grow our community gallery and support local artists with an outlet for their art and craft.

There's a new exhibition of paintings from 1st February, plus lots of new craft work coming in daily, so do call in and say hello and take a look at what the talented people in our community are creating.

Perhaps you're neither an artist nor a crafter, but would enjoy being involved with the gallery ... by joining our team of 'Friends of White Rock', some of whom help by doing a 3-hour rostered shift (or two) for us each month. It's a great chance to meet people and to spend time in a lovely space. To find out more phone Lorraine 09 439 2178 / 021 250 8613 or Kathy 09 431 7144 / 021 124 2544.

If you'd like to become a Member, or a Friend, please phone us on 09 439 2178.

SHOP & BREW

Moonshine & Curios

Home Brew Supplies

Great Gift Ideas

Layby Available

Wed-Fri 10am-4pm

Sat 9am-3pm

Sun 10am-2pm

1994 Paparooa Valley Rd

09 431 6547



Museum summer season

The summer season is in full swing at The Kauri Museum with the usual upsurge in visitor numbers for this time of year. It is good to see and hear the museum full of people from all over the world mingling with domestic visitors and all enjoying the displays.



The busy Kauri Museum stall at last year's Paparoa A&P Show

In preparation for 2019-2020, a marketing group is to be established to work on ideas and material for promoting the museum. Some work has already begun with a local film company working on the production of three short publicity clips. Based on ideas developed by members of the film company, these feature local actors and original music especially arranged to accompany the pieces. These will be uploaded to social media so look out for them.

The museum has already booked stalls at a number of tourism Expos during the autumn and winter months and is producing new material to present at these events.

The Community Outreach group will be out in the community over the summer, beginning with a display in the Pahi Hall on Saturday 26 January during the annual Regatta. The following Saturday the team will be at the Paparoa Show with a display of photographs

from the museum collection.

The Museum is sponsoring a photography section award in the Paparoa Hall indoor exhibitions. Four days later, the destination is Waitangi where, for the first time, The Kauri Museum will have a stall in the Treaty Grounds on Waitangi Day. With set-up time at 6am, it's going to be an early start from Matakohē!

The new Annual Pass for Otamatea residents and ratepayers is now available for purchase at the museum. For the cost of slightly more than one admission ticket, the holder is able to visit the museum as many times as they wish for the following twelve months. It is very good value and already many people are taking up the offer.

The Board of Trustees and staff of The Kauri Museum thank all those who visited the museum during 2018 and we hope to see you again in 2019.

Mary Stevens

THE KAURI MUSEUM

Real New Zealand Heritage

What's on at your Museum



Exhibitions:

- * Heritage Christmas Decorations
- * Twelve Holiday Hotspots
- * Heritage Rose Collection

For residents of the old Otamatea District: Annual passes available

5 Church Road, Matakohē, Northland. p: 09 431 7417 w: www.kaurimuseum.com

Museum volunteers

Volunteers have been supporting and working at The Kauri Museum ever since it opened its doors to the public in January 1964. Some have been giving their time freely for many years.

Diane McDonald, collections technician, employed at The Museum for the last 18 years says "Without volunteers the museum could not function. They make my job a lot easier. I enjoy the fun when they dress up and pose as mannequins, surprising our visitors. Our Volunteers have helped to create the museum and make it the special place it is today. I'm very proud to be part of the museum family".

Many jobs big and small are undertaken by volunteers who help with the day-to-day running of the museum. There are those who assist in the shop, and a dedicated gardening team who tend the gardens including the heritage roses. A plaque from the NZ Heritage Rose Society was recently awarded to recognise the planting of nationally significant roses.

The 'flower ladies' arrange fresh vases of flowers throughout the museum each week which are greatly appreciated and commented on by visitors. 'Bus greeters' (often dressed in costume) also play an important role, giving a 5-7 minute overview of the history of the museum as visitors arrive.

Wednesday is Volunteers' Day, with morning tea at 10am and the 'textile ladies' and 'engine boys' mingle with staff and enjoy the delicious food - June's scones, Joy's pikelets, Margaret's cake or slice. There's



Volunteer Peter Matheson poses in the Museum's 'longdrop'

always chat about what's going on in the museum and around the wider community. Friendship and camaraderie come with being part of the museum team.

The 'textile ladies' help maintain the textile collections, and organise and set up exhibitions such as 'Textiles Down Under' (underwear) and 'Final Touches - Hat and

Gloves' from the Kauri Museum collection. Maintenance of the working machinery is undertaken by the 'engineering boys' and they help with many other jobs when asked.

The Friends committee raise money and support museum functions throughout the year. Members of The Kauri Museum board give their time and skills freely to support this wonderful community asset.

If when reading this you feel that you would like to join our wonderful team of volunteers you would be most welcome. Call Tracey 09 4317417.

Verity Baines

Books @ Ruawai

5 Freyberg Rd, Ruawai

Selling secondhand books & music

Loads of good holiday reads

Lots of children's books

Fill a bag of books for \$5

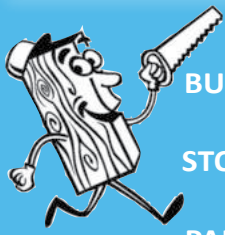


Open: Monday, Tuesday 9-12 noon
Wednesday, Thursday, Friday 2-4pm
Saturday 10am-1pm

Ph 09 439 2044

027 200 5653 or 022 073 9752



HANDYMAN

BUILDING
-
STOPPING
-
PAINTING

ph Cam 021 77 77 92

Paparoa Print Shop

**At Skelton's
Paparoa Drapery
431 7306**



**See Robyn for
all your printing needs**

SKELTON'S

**Summer Sale
on Now**



Skelton's Paparoa Drapery

Mon-Fri 8.30am to 5pm Sat 9am to noon

Ph 431 7306

Le Quesnoy with Sue & Mike Plunkett

In mid-October last year Sue and Mike Plunkett set off on a 4-week adventure to Europe, to follow paths and stories from both sides of their families. The beginnings of the trip arose from Sue's cousin saying two years prior, "Lets go to France for Le Quesnoy 100-year centennial for our grandfather". This idea found Sue and Mike and 14 other family members in France on the 4th of November witnessing this commemoration. The trip turned into more than this though with many more adventures to be had.

Following the family story of Sue Plunkett (nee Harding)

We spent a few days on the south coast of France, followed by a 4-day cruise up the Rhone river. Unfortunately it rained most of this time and we both had turns getting 'the bot' - but it was still great. We finished up in Lyon and, with a couple of cousins in tow, did a 3-day road trip to Valenciennes.

These were interesting times for Mike, trying to get used to driving on the left-hand side, and a couple of scary moments ensued, including getting stuck at one of the many motorway toll booths unable to be understood. Luckily, the trucker behind us helped out - he had to, otherwise he would still be waiting for us to get sorted! We tried to drive mostly rural roads when we could, making just a few wrong turns. Mike's three



Sue Plunkett & family (with Mike), at Le Quesnoy - Sue holding the memorial photo of their grandfather Capt. E Harding

'backseat drivers' did not help either as they all gave different instructions.

We met up with the rest of the family in Valenciennes where we visited the Somme battlefields and memorials. Caterpillar Valley Cemetery was a very powerful and emotive experience - a person can see many photos of war graves, but it's very sobering when you're standing right there in front of them. This feeling is made even stronger with the hundreds of graves marked:

*Soldier of the Great War -
Known Unto God*

We were there to commemorate the WW1 centennial in Le Quesnoy, an old fortress town in north east France that was occupied in WWI by the Germans from 1914. On 4th November 1918 the NZ Rifle Brigade liberated the town. Towards the end of the battle our grandfather, Capt. E Harding commanded the first battalion.

The Germans surrendered late in the afternoon after the fourth battalion scaled the walls of the town with makeshift ladders. Heavy artillery could have brought down the walls but that would have also killed many townspeople and the New Zealanders weren't prepared to do that. Whilst 136 New Zealanders and many less Germans were killed no civilians died. As a result, the Le Quesnoy area maintains a very strong affinity with NZ.

At the centennial, some of the original Battalion soldiers had up to 80 of their New Zealand descendants present.



Mike Plunkett stands beside the famed ladder, scaled by the New Zealanders, on the narrow sluce gate ledge.

Only two members from each family were permitted on the battlements for the official ceremony and my cousin Peter Harding and I represented our grandfather. Our family left a memorial of him, a framed photo adorned with poppies and ferns, put together by Raylee in Paparoa, which had travelled safely all the way to France on our trip of a lifetime.

Sue Plunkett with Maggie Hames

Privet in full summer flower

A drive around our local area and beyond to Wellsford at the moment makes one aware of just how much privet there is growing wild along roadsides, in properties and along fencelines.

In full flower, the bright yellow/cream flowers are easy to spot. Take a detour off the main road and there's plenty more!

The Otamatea Weed Control Group (local volunteers)



have been beavering away at infestations of privet and eleagnus around Paparoa over the last year. As part of a five year plan, once the Paparoa area has been cleared, the group plan to target Pahi Peninsula, the next step toward creating a privet and eleagnus free region. Matakoho will follow and then they will head over to Maungaturoto.

It's gratifying to see some homeowners also cutting out

their flowering privet. Contact Loraine 431 7290 for supply of the herbicide paste to be applied immediately after chainsawing or chopping.

First 2019 working bee is Saturday 16 Feb 9am-12noon.

Meet at the Paparoa School car park to continue working on the side of the stream Franklin Road. 'Many hands make light work'. Just turn up or contact Jacque Knight 021 488 822.

PP

Notification of weed control

TAG Vegetation Control (on behalf of Northland Regional Council) are planning to treat tree and Chinese privet on roadsides of SH12 between SH12 (Brynderwyn) and 200m beyond Matakoho East Rd in February in good weather.

Herbicide (metsulfuron-methyl 600 with organosilicon penetrant) will be applied by hand-held spray gun or stems drilled and filled. Stringent regulations will be adhered to. Signs will be out to indicate where they are working at any time.

To find out more call Jacque Knight 021 488 822 or Guy Forbes (TAG vegetation Control) 027 483 7209

FARMWORK SERVICES

For all types of fencing, stockyards, handyman work, tree felling, tractor work etc.



phone

**Mike 09 431 6509
027 203 2694**

email

farmwork.services@gmail.com

**12 tonne digger now available
for driveways, farm tracks, hole boring etc**

Community Connexions

- Arty Farties Inc.

FOOD BANK - PATAKA

While lots of veges were supplied to the food banks over Christmas, no food banks were open over New Year. What can we do to fix that? We are trialling a pantry (pataka).

The idea is: go to your own pantry cupboard and see if you can see any items (e.g. a packet of soup, tin of baked beans, or whatever) that you could spare to donate to our communal pantry outside Arty Farties gardens. Donate and/or perhaps swap it for something that is already there. You can always pay it forward- someone always wins!

We provided food parcels for the sick or infirm and for others who needed support in our neighbourhood over Christmas and New Year.

Our New Years Resolution: To encourage people needing food to come and see us. If we've got it, we'll give it. Remember, our volunteers are working to help those in need.

WEEKEND WORKSHOPS coming up at Arty Farties Inc.

Sponsored by Creative New Zealand and Kaipara District Council.

BEGINNERS DRAWING with John 23-24 Feb 10am-2pm.

MOSAIC WEEKEND Female bust mosaic 2-3 Mar 10am-2pm.

COST: koha. All enquiries to Anne 431 6229.

Cheers from us all at Arty Farties.

Quote of the month:

"Remember that children, marriages and gardens reflect the kind of care they get."



Need a Shed?



- Timber and steel buildings any size
- We do plans and engineers designs for council
- Farm sheds
- Commercial buildings
- Feed pad shelters
- Goat/Chicken sheds
- Horse stables
- Lifestyle sheds
- Excavation, driveways and concrete floors

Your local builder: Andre Nicolai 021 202 9854

Science Corner

The Right to Repair



Many of us are trying to follow the 'Reduce, Recycle and Reuse' mantra to hopefully help our planet, but there is a new cry out there in *bbc.com news*. It's the 'Right to Repair'!

New appliances break down just after the warranty runs out! How do you get rid of old TVs?

We are forced to buy replacement appliances when things go wrong, which in turn increases green house gases released into the environment. Yes, many new appliances use less energy and have new fancy apps, but buying a new one every few years must surely use more power.

Citizens in the EU and parts of the USA are fighting to make manufacturers produce goods that last longer and which are easy to mend. They want to make changes such as when a light bulb blows in an appliance you don't have to pay to get a whole new component just to replace a cheap bulb.

I remember the days when a toaster and electric jug lasted a lifetime as all you needed to replace was the element. My little old green Datsun car always had a handy group of workers keen to fix the small things that went wrong - that was before everything was computerised.

So far the EU is only referring to lighting, televisions and large home appliances. What about smart phones and printers?

A study of junked washing machines at a recycling centre showed that more than 10% were less than 5 years old. The 'Right to Repair Group' wants products able to be fully disassembled and repaired with spare parts advice supplied by the manufacturer. The British Government supports the proposal. Any country wanting to export to the EU will need to adhere to these rules if this is passed through parliament. An interesting possibility!

Stella



From our family to yours ... garden grizzling

It's been a while since I updated about our veggie garden, probably because I never see it for very long anymore.

The MOTH (man of the house) is now the veggie grower, and he is doing a very good job (I have to say that as he will read this) but he doesn't have my level of attention to detail. After all, overlooking one dock plant can have dire consequences, when next year 40,000 baby dock plants look to take over! And, overlooking one strand of kikuyu can lead to a forest of the stuff, seemingly within days!

I guess that now I have publicly nagged him I will not be allowed to eat all his lovely tomatoes, but attention to weed detail is important.

The garden is now also safe behind a fence of netting,

after last year's ducks v melons incident. Once baby Hudson is crawling, I plan to train him to keep these pesky beasts from the deck also.

Although men and babies alike are hard to train, perhaps I should work on letting go of my need to control; letting go of my expectations for a weed free garden space; letting go of becoming irate at poopy ducks just doing what poopy ducks do... This is why people live in apartments with no plants or pets, I guess. Or children.

What would I do with all that free time? Lets not go there...

Enjoy your February gardens regardless!!

Jenny

I've been thinking ...

What else can I do at 2am? Turn on the light, wander about the house, while TV or radio meet with extreme disapproval from some quarters.

I doubt if my thoughts at this hour are very profound - nothing in the "I think therefore I am" category. My thoughts are like butterflies:

fluttering seemingly aimlessly, landing occasionally. I cannot guarantee that I will have the same ideas or make the same judgements tomorrow or next week. My thoughts have not been tested in sunshine or shadow.

I've been thinking ... about schools, timely perhaps as the education year begins. Schools are pestilent places, but were they ever so?

I look back to my own childhood experience and can remember only the chickenpox which left evidential scars which have since disappeared into wrinkles. Each term the teacher would praise those kids who had **no** absences recorded and there were a lot of them so we must have been a fairly healthy lot.

I do remember my own children getting mumps because they kindly passed them on. There were a few other unwelcome visitors of the nits and school sores variety: the occasional cold, but not many prolonged absences (and this is not wistful nostalgia).

It seems to be different with my grandchildren. They are immunised against all the old favourites, but nature seems to have devised all sorts of variations on the virus, flu, tummy bug and diarrhoea themes and some child always seems to be suffering at home.

The latest fad is something I had never heard of called 'foot and mouth' which involves painful blisters on palms and soles of feet.

This pestilence almost certainly comes from their school. Admittedly they go to an urban school and I sincerely hope our local establishments are less toxic environments.

Daughter-in-law pointed out that, in a society where both parents must work away from home, it is difficult to arrange for someone to look after a sick child. So the child is sent to school along with accompanying bugs. Don't get me wrong. I totally sympathise with parents who are caught in such positions. Just as I sympathise with the teachers, staff and other pupils who become vulnerable to infection.

Can anything be done about such undesirable situations?

RS

Unichem
Orrs Pharmacy Maungaturoto

**For all your health and beauty needs
at competitive city prices and with
friendly country service -
call in and talk with Simer,
Karen, Gayle, & Crystal
- if we haven't got it,
we will do our best to get it!**

*Enjoy the benefits of shopping
locally and save petrol -
we are worth the visit!*

*Don't forget -
if you are unable to collect
your prescriptions from the
Pharmacy we can deliver daily to
Paparoa, Matakahe and Tinapoi -
confidentiality assured.*

144 Hurndall Street, Maungaturoto
Phone (09) 431 8045
Fax (09) 431 8808
maungaturoto@orrs.co.nz
Open Monday to Friday 9am - 5pm

**SHOPPING THAT'S TWICE
AS REWARDING.**

Fantastic fishing comp

Another glorious Tinopai School Fishing Comp has passed and once again we're happy to have raised nearly \$8000 to part-pay for our classroom Teacher Aid to work with our amazing students. The day was truly magnificent with bright blue skies and clear blue water.

SPRAT CONTEST

Though the sprats were a little hard to get due to low tide, the kids persevered at the wharf, the bridge and here and there, all over Tinopai. There was a definite winner - Taj Bardinnet caught a 2.4gm sprat at the wharf! Taj's mother Verity is an ex-student of Tinopai School, and grandparents Gay and Rod Neels still reside in Tinopai, so it was wonderful to have a local boy win (even though he's lived in France all his life). A huge thank you to Civiltrain engineering's Stu Moulding who donates the playstation prize each year and has made so many Kaipara children happy.



Sprat winner Taj Bardinnet



A huge thank you to our many sponsors and donors. The discount we get for the fishing gear prizes from Top Catch Whangarei is phenomenal, the donations from Kaipara businesses to fill our Spot prizes make them look amazing, carnival rides from KidzTime are loved by all, and, best of the day was the fully signed 2018 All Black jersey donated by Mark and Angela Bell that sold for \$1200! Wow, your support is phenomenal.

Of course, we can't do without the many, many workers, whanau and friends of Tinopai School who organise things for weeks beforehand. We honestly could not have such a good day without you all. Ngā mihi nui ki a koutou!

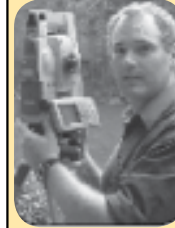
Last, but not least, thanks to everyone who participated in all aspects of the day. Some of you have been coming for years and we love seeing you bring your children and grandchildren. Thank you, thank you, thank you.

NEXT YEAR

2020 will be Tinopai School's 20th Fishing Competition and it's going to be a biggie! There's lots of talk swirling around already about this prestigious event and we certainly want to give it the kudos it deserves. We hope to see you all next year - and once again thank you for your support this year.

Sonya Kaihe
Principal, Tinopai School.

Birt & Currie Surveyors Ltd



Local Phone
09 280-9591

Timely,
friendly &
personal
service

info@landsurveyors.co.nz
www.landsurveyors.co.nz
PO Box 120 Paparoa 0543

AL's Upholstery

Alan Hilton



Automotive
Furniture
Covers
Seats

over 30yrs experience

021 0709101
100 Petley Rd, Paparoa

THE MAIN CONTEST

Once the big fish started rolling in you could see most people had had a good day out on the water! We had so many fish donated back to us for the auction it was incredible. 'Noisy' had a hard time trying to sell it all but, as usual, he hung in there and sold the lot. (Not too much for you Shane-you rock!)

Paparoa County Depot Trust

Paparoa County Trust was formed in 2000 when Kaipara District Council sold their depot yards and buildings (the Old Otamatea County Council) to them for \$1 on the proviso that all profit (after maintenance, rates etc.) is paid out as grants to local volunteer groups (charities and Incorporated Societies). The Trust provides secure container storage, short or long term, and leases the buildings at Depot Road, Paparoa. At present the main buildings and garage are leased to Paparoa Fire Party (FENZ) and the workshop to Fraser Fabrications. There are also 18x20ft containers and two outside sheds. Over the past 17 years the Trust has allocated over \$135,000 in grants, applications for which are called for annually dependent upon money available.

A committee of local area volunteers administer the trust; no wages or honorariums are paid. The Trust is registered with the Charities Commission. Registration Number CC40684.

2018 SUCCESSFUL GRANT APPLICATIONS

In December 2019 a total of \$16,400 was allocated to the following successful applicants:

- Linking Hands
- Nth Kaipara Agricultural Assoc.
- Matakahe School
- Paparoa Sports & Recreation Soc
- Otamatea Community Services
- The Kauri Museum
- Otamatea Sheep Dog Trials Club
- Paparoa Medical Soc.
- Paparoa Community Library (container loaned during renovations)

HOMEKILLS



WAYNE & ANNETTE

09 439 2020

Dry Aged Beef Specialists
Traditional Manuka wood smoked Bacon & Ham
No Retail
TOKA TOKA

first national REAL ESTATE | Roper & Jones

Tony Northcott



I have buyers looking for houses, lifestyle blocks and farms now. If you are considering selling your property, call me today for a no obligation free appraisal.

021 831 864
tony@fnkaipara.co.nz
roperandjones.co.nz



HUBAND
CONTRACTORS

Need Water?

0800 234 449
or
021 357 383

do you need a
WEBSITE ?
Local, friendly
website design
& management.
sme-sitedesign.co.nz

Contact Paul for more information:
E: paul@sme-sitedesign.co.nz
T: 09 431-7063
M: 022 625-4156

Get More Customers
Cost Effective Marketing

Vivienne Shepherd: couturier of past and present

A striking Marie Antoinette style dress caught the eye in the entrance to the Maungaturoto 2nd Hand shop.

The beautifully detailed reproduction of the Rococo period seen was the creation of Vivienne Shepherd, a Whangarei resident and sewing artiste and tutor. The rococo jacket has gold dupion silk tails, the back laced with ribbon, while the full skirt has the required bustle and side panniers. The fabric is a gentle combination of greenish and white stripes dotted with red petals. Red, to remind us of the fate that met many French royals (or just unlucky associates) on the guillotine.

Vivienne worked on this dress for a month and says it is completely lined. She made use of an attractive old bedspread and the bodice is boned with the closure by hooks and eyes, while the layers of lace have been cut and layered to fall in a luxurious froth of white. A similar costume would cost in the region of \$2,500 - \$3,000.

Vivienne says that she has always been aware of the trend 'Steam Punk', but it was

not until she was visiting the Whangarei market that she met the members of Kraken's Lair. Her response was a simple, "Oh, you're here"! She went to their next meeting, immediately taking to her sewing machine.

Steam Punks are time travellers and Vivienne's alter ego is Cayte Shepherd. The fanciful clothing is not necessarily true to the period although the Rococo creation only hints at the steam punk in some of the ribboning and tat.

At the moment Vivienne is gearing up to make a costume for the Vintage Machinery club's annual "Crank up" (16-17th March 2019) at the Dargaville Museum. She is creating a costume in several shades of grey to emulate the female clothing of a worker in the Victorian times - a fanciful female mechanic.



Our Kate Sheppard would expect nothing less!

If you fancy a costume for a very special event or would like to learn to sew your own garment contact Vivienne!
vivshepherd1@gmail.com

COLOUR & CUTZ

- Ladies & Mens Cuts
- Colours & Highlights
- Weddings
- Gift Vouchers

All colours & products used at the salon are organic

Salon 431 7255 Gaye 021 115 8056

OPEN TUESDAYS TO SATURDAYS
Make your Xmas appointments early
1994 Paparooa Valley Road



Paparooa Motor Camp

CABINS | TENTS | CARAVANS | MOTORHOMES

17 Pahi Rd, RD1, Paparooa, Northland. Ph: 09 431 6515 Email: paparoomotorcamp@xtra.co.nz




Set in a quiet rural area, within easy walking distance to picturesque village with shopping facilities, a general store & post office, service station, restaurant, friendly country pub, takeaways, café, gallery, bush walks. Only 6kms to the Matakoho Museum.

www.paparoomotorcamp.co.nz



Letters from The Old Post Office

Much ado about nothing.

Dear Reader,

It seems some time since the antics of the-man-in-the-shed have been seen in the light of the day. In some ways reminiscent of the habits of the vampire, he is loth to set foot out into the clear light of the morning. He prefers his sunlight at second hand and through the safety of green glass.

So, it was with both alarm and dismay that the cat, dog and I realised that not only was he venturing into that natural phenomenon, the 'outside', but was doing so armed with a battery driven clipping device. We hovered, in silent appal.

The ladder was found, the legs disentangled from old sacks, pots and compost tea. As an aside, this last mentioned concoction is a rather fetching brew of old cow manure, water, seaweed and fish bits. It certainly did not deserve the unpleasant remarks aimed at its composition and indeed its creator. It is supposed to smell, that is the point.

Finally, the ladder was positioned in the required spot and much creaking followed. Not just from the ladder. The object of the exercise was to destroy the creeper concealing the tank. True, it was escaping into places where it was neither welcome nor required. Needless to say, the three silent witnesses felt total destruction was taking it too far, as did the resident fantails, praying mantis (and they were) and other sundry insects. The harsh whir of the device poisoned the languid air and the shriek of falling vines testified to the environmental trauma. Then, suddenly, silence fell. The battery had run out of juice. The cat, dog and I blocked our ears. The rape of the vine had been halted.

We remind the man-temporarily-out-of-the-shed that

"It is in the still silence of nature where one will find true bliss"
(anon).

n.b. The battery charger seems to have vanished. Allegedly. Deb



The Pied Piper of Hamelin

Planning for ORT's Youth Theatre held each January usually starts months in advance. A legend or historical event is turned into a show, choosing music for both song and dance, which needs to be carefully tailored so that children of all ages and abilities can play a part - some are better at singing, others prefer acting, and some youngsters are lovely dancers.

This year the two consecutive weeks (held with two separate intakes of 30-40 children) was no exception. The tale of *The Pied Piper of Hamelin* was presented at week's end by the enthusiastic participants in a full hour-or-so-long show to packed audiences. The story, complete with rats, children, councillors and mayor, the town citizens and The Piper is based on the mainly true story of the German town of Hamelin. Dating back to the Middle Ages, a piper, dressed in multicolored clothing was hired to get rid of the rats. When the council refuses to pay he retaliates by using his instrument's magical power on their children, leading them away with his magic flute and they are never seen again. Through the week the directors



Hamelin's festival includes a maypole dance

work with the children so they understand the story and then, with their help, devise the dialogue around the musical numbers. A little 'theatre magic' is incorporated with special effects, which the children love. Set, props, costumes, makeup and lighting all add to their experience.

Often the stories include learning about other cultures and historical events. In the past four years songs have been taught in German, Irish Gaelic, Chinese, and Native American Indian languages.



The townspeople protest to the council about the rats



Pied Piper played by Abbi Smith

Peter and Maura Flower have been behind Youth Theatre since 2003. They have a passion for theatre and for working

with young people. The classes have become so popular that some youngsters, who have moved away to the South Island, return every year to be a part of it.

Maura told us "What is astonishing about Youth Theatre, is that we have the children for only five days. Most shows have a rehearsal period of three months. We fondly refer to Youth Theatre as our 'Two Weeks of Madness'."

White Rock Gallery
 Original Kaipara Created Arts & Crafts
 5 Church Road, Matakoho next to The Kauri Museum
 Gallery 021 0267 8241
 Enquiries 021 250 8613
 whiterockgallerynz@gmail.com
 Like us on Facebook
 There's something for everyone!
 OPEN 7 DAYS 10am-4pm

PETE THE BUILDER
 your local friendly builder
 Peter Clark
 Ph: 0276 713 416
 petethebuilderltd@gmail.com
 582 Pahi Road, R D 1, Paparoa, 0571
 A/hrs 09 431 6005

OCS news

Hello from OCS and we hope everyone had a happy and safe Christmas and New Year.

We're up and running and quite busy already.

WHANGAREI SHOPPING TRIPS

The first shopping trip of 2019 to Whangarei will be Tuesday 12 February and then Wednesday 27 February. Let us know on 431 9080 if you would like to go.

CHOCOLATE BINGO

Starts Wednesday 20 February at the Anglican Church Hall. Arrive 10am for a cuppa and chat, bingo games from 10.30.

SENIORS' LUNCH - WEDNESDAY 6 MARCH

The first seniors' lunch this year is Wednesday 6 March. (Please note - NOT in February because of Waitangi Day)

OUR SERVICES ARE FREE

Remember, all our services are free and our qualified professionals are here to help you. If you would like help from one of our counsellors, the parent coach, a financial mentor or a social worker, just call in to the Community House, phone on 431 9080 or fill in the online referral form which can be found on our website Otamatea Community Services.



The Manager and staff of OCS



NORTHLAND'S BIGGEST BED OUTLET STORE

- 1/2 PRICE BEDS
- SECONDS & SAMPLES
- SLAT BEDS
- PILLOWS
- TOPPERS
- ADJUSTABLE BEDS
- BEDROOM FURNITURE



STOP BY AT THE WELL CAFÉ OPPOSITE US—WHEN YOU COME

09 439 2243
 18 FREYBERG ROAD, RUAWAI

Starbright Wellness

Massage

Reiki

Reflexology

Fri/Sat
bookings

Vicky Jennings

021 2484259

144 Franklin Rd, Paparoa

**Neonicotinoids Do they kill bees?
Should NZ ban neonicotinoids?**

A small study on this topic looking at both sides of the argument, was undertaken by our regular gardening contributor Stella Clyde.

WHAT ARE THEY?

Insecticides used by agriculturists/gardeners in soil, lawn and seed treatments. They are systemic which means they are taken up by the plant into the plant tissue - leaves, flowers etc. Derived from nicotine-like compounds, they're distributed as insecticides such as Confidor, Calypso, Cruiser and Poncho. Largely used for seed treatments, they are less toxic than previously used organophosphates but are widely used for grass seed, avocados, brassicas, sweetcorn, lettuce, onions, kiwi fruit and many more crops.

BAN THEM?

According to research done in 2017 these neonic pesticides are extremely harmful to bees and other non target species including vertebrates, even in barely measurable amounts.

Professor Mitchell (who was on the above-mentioned 2017 research team and recently at Lincoln University, NZ) said there is a growing international swing towards banning the pesticides, with France slated to cut the substance from September 2018. In 2013, the European Union imposed a moratorium on the use of certain neonics on crops attractive to bees such as sunflowers and rape, and is now considering a proposal to extend this. He said there was growing evidence that these pesticides are also affecting vertebrates, including humans. "We cannot truly test

the impact of any pesticides over a long term at very low concentrations. We're really experimenting on ourselves over the last 15 years or so with these pesticides."

The Pesticide Action Group thinks this is a wake-up call as neonic pesticides are absorbed by all parts of the plant and bees could be exposed to the pesticide through water droplets on treated plants such as corn in the early morning.

THE OTHER POINT OF VIEW - USE THEM WITH CARE?

Victoria University Professor Phil Lester said there is limited use of neonics in NZ and there was no sign of colony collapse or evidence of neonics in the number of hives inspected in Gisborne. Spraying of budding or flowering plants near bee hives is prohibited by the Environmental Protection Association (EPA). He feels that banning neonics in NZ is not warranted without further data. The EPA feels there is no need for action as NZ has very strict rules.

AGCARM.CO.NZ FACT SHEET - JUNE 2013

(AgCarm represents, supports and advocates for the Plant Animal Science Industry in NZ).

- The use of neonic pesticides is mostly as a soil drench rather than a foliar spray. It has been used in NZ for 20 years. It reduces the need for pesticide usage during crop growth.



The loss of bee colonies has more to do with the varroa mite than neonic pesticides. Australia has a very healthy bee population and has no varroa mite and has been using neonic pesticides for 20 years.

- Commercial cropping of silage maize would be almost impossible without the use of these pesticides. Very low rates of application are possible with these products.

- There are only three ways bees could be affected by neonics:

- Dust from seeds when planting
- Pollen and nectar from treated crops
- Gutation fluid (morning liquid exuded by plants) being taken up by bees

Agcarm states that all these possibilities are covered and cause no risk to bees. Banning these pesticides would cause great difficulties and increased costs to agricultural production.

CONCLUSION**This is food for thought.**

I am sure there are other articles on this subject and I make no judgement, but at least I am now better informed!

I won't be using any of this pesticide and will check what the seeds are treated with before I buy.

Stella

KMU SURVEYS LTD
MAUNGATUROTO

Ken Urquhart

Licensed
Cadastral
Surveyor

09 431 8705

021 161 2344

kenurquhart@xtra.co.nz

CLEMENTS FENCING
For all your yard and fencing requirements

021 636 912
oclements@ubernet.co.nz

CABINS FOR RENT

2.4 x 3.6m \$65 P/W

2.4 x 4.2m \$75 P/W

plus delivery & bond

INCLUDES POWER LEAD,
CARPET, AND CURTAINS

FULLY INSULATED

Ph Keith 021 2394251

Kaipara Hunting & Fishing**CHRISTMAS TARGET SHOOT**

The annual Christmas shoot in December saw 28 shooters turn out on the day to enjoy the challenging course provided.

THE FISHING LADDER has started afresh for the 2019 year, with two early results in:

Seniors: Snapper Annette Pull 6.5kg

Juniors: Kingfish Tara Wrathall 16.2kg

UP-COMING EVENTS

Clay Target Shoot - February 10th, 10am start, club grounds Hames Road, Maungaturoto

Parry Shoot - heaviest bird weekend. Weigh in at the club grounds at Hames Road, Maungaturoto from 4-5pm Sunday February 24th.



Club contacts:

President Cameron Shanks 09 431 6229

Treasurer Andy Thompson 021 129 4378

The summer garden

Weather extremes seem to be becoming the norm what with it being extremely wet earlier and now so very hot.

This seems to have helped in some areas - so far, less wasp nests as they got washed out earlier (but don't speak too soon), ripe tomatoes outside by Christmas, wonderful blackberries as of January 12th on the roadside (see pie recipe at right) and buttercup squash ready now.

But it's hindered in other ways - tomato plants getting blight from the high humidity (only some varieties) and I had to spray my melons for powdery mildew. I used the remedy of about 2 teaspoons of baking soda and a few drops of detergent to a 2 litre milk bottle and I hope it will stop it.

Any planting you might do during this heat will need careful care and watering. Water left on the leaves can burn the foliage as the water droplets magnify the sun's rays.

There's still time here in the north to put in another crop of beans, corn and tomatoes if you're quick. Lettuces don't like the heat so find a cool spot for them. Likewise coriander which will go straight to seed, so unless you have a cool spot it's best to leave planting it 'til later.

Enjoy the lovely cool mornings and evenings and stay out of the sun in the heat of day.

Stella

BLACKBERRY PIE RECIPE



1. Turn on oven 180 degrees C
2. To make the pastry:
Cream 75gm butter with 50gm sugar. Add 1 egg, beat well. Add 150gm flour sifted with 1tsp baking powder.
Mix well and roll out. (This can be difficult and it can fall to bits easily. Extra flour will help and rolling out on baking paper makes it even easier.)
3. Put fresh blackberries sweetened with sugar in a pie dish. Mix in a bit of cornflour to thicken the juice as it cooks.
4. Place the pastry on top (do it like patchwork if it's hard to pick up).
5. Cook until browned on top about 25-30 min. Enjoy!

Note: Can be substituted with precooked stewed fruit. Stella

PLUMBER

Kaiwaka to Ruawai

- 30 years' experience
- All plumbing services including new houses and maintenance



ANDREW KENNY
ph 027 642 8320

Keith the TV Guy

Freeview digital TV



20 TV and 9 Radio/Music channels are currently being transmitted.

Satellite dishes, decoders, cable etc., supplied and installed.

09 431 7143
or 021 239 4251

Book reviews

I have decided to review two books this month as two of my current favourites are set in ancient Greece and sort of 'talk to each other'.

TITLE: Circe
AUTHOR: Madeline Miller



'Humbling women seems to me a chief pastime of poets. As if there can be no story unless we crawl and weep.'

This is a flawless read. Fans of Greek mythology, Marina Warner, complex heroines and of just a darn good story will love this. Madeline Miller wrote another of my favourites – The Song of Achilles and this is just as richly woven and compelling. The story begins in the court of Helios the sun god and Circe's father. Circe is not beloved and the gods are capricious and cruel. When Circe is exiled for turning her rival into a monster she begins to come into her own. This is a feminist retelling of the myths from the perspective of the women who were ignored and vilified.

TITLE: Silence of the Girls
AUTHOR: Pat Barker

Silence of the Girls is a retelling of Homer's Illiad, that tells the story of Breseis, who was given to Achilles as 'spoils of war'. Much like Circe, this is a feminist retelling of an ancient story in that it gives voice to the girls and women who were essentially collateral damage in the Trojan War. This is a story of survival and war and it is brutal. It doesn't have the humour and lightness of Circe but it is an interesting historical novel. Despite telling the story of Breseis, the depictions of Achilles and Patroclus have a lot of depth and the retelling, despite being from Breseis' perspective, stays very close to the original story. I recommend reading these two books close together. Circe remains my favourite but they are both intelligent and well written reads.

Available at your Kaipara Libraries: kaipara.kotui.org.nz
Also available on eBook.

Simie Simpson



Kaipara Cleaning Co.

Tim & Sharlene Lord

- Pest Control
- Carpets & Upholstery
- Interior and Exterior Home Cleaning

e-mail - kaiparacleaningco@farmside.co.nz
Facebook - www.facebook.com/kaiparacleaningco

Phone 021 114 6729
www.kaiparacleaningco.co.nz

LIFESTYLE AUTOS

Roger Price

Full Mechanical Services

Warrants of Fitness



Paparoa Valley Road - next door to g.a.s.
Phone 431 6620

Pets in the Valley



Well I hope lots of you got along to the She Shears movie at the hall recently. Full marks to the hall committee for coming up with the idea and making it happen.

And so, on the subject of sheep, one of the main advantages of shearing sheep is it helps to prevent fly strike. Do you know the difference between a primary strike fly and a secondary one? A primary strike fly can attack healthy skin whereas secondary strike flies need some damage to get attached.

Prevention is the key to saving your sheep being eaten alive by maggots. Flies like smelly wool so preventing dags with drenching and crutching, treating any lameness (the smell of the feet gets into the wool when the sheep lie down), and of course shearing in early summer and then prevention with one of the many strike prevention products out there.

Don't be fooled into thinking that Wiltshire sheep who shed their wool don't need treating. In some ways they need it more as their wool is often partially hanging off in clumps and has potential to get wet and smelly.

If you see a sheep behaving differently or lying by itself check it out immediately as fly strike can kill quickly!

And with that lovely thought ... enjoy the rest of summer.

Janine

HEY, KIDS . . . COMPUTER GAMES



After talking with Master 10, apparently this Kids Page has been lacking one thing important to kids - computer games.

While we here at the Press do not promote kids sitting indoors for hours a day playing these games, they are a part of a modern child's playtime. Here are some favourites - if we've missed yours, why don't you write to us (press@paparoa.org.nz) and tell us?

MINECRAFT

Released in 2011, this cubist dream game can be played in survival or creative mode. Its like virtual lego, you can build whatever you like, or fight the creepers.



FORTNITE

Released in 2017, there are different game modes, including creative play, player vs player, and missions to fight zombies.

ROBLOX

Released in 2006, Roblox is a massive multiplayer online game creation platform that allows users to design their own games and play a wide variety of different types of games created by other users.

LEGO

There have been 69 commercially released Lego computer games since 1995, such as Racers, Bionicle, Ninjago, Legend of Chima, Star Wars, Harry Potter, Batman and Marvel Super Heroes.

FRIV

Just one of the many online gaming websites, hosting a variety of free games (mostly) suitable for kids. **Trouble Tank** is a hit in our house.

As with all online activity, see what your kids are playing- does it involve shooting people, or are they building new worlds? Some games might seem harmless to adults, but not all themes are suitable for kids under 14, and some games are definitely R18 and should stay that way. PP



Rhoda Morrison

Consistent Award Winning Salesperson

Achieving top results
for Clients!

09-431 6912
0274 800 691

rhoda@lnkaipara.co.nz
www.roperandjones.co.nz



Dargaville Realty Ltd, Licensed REAA 2008

BATTENSBY Bros.

CONTRACTING LTD

- Firewood (WINZ approved) • Ground Cultivation
- Fencing • Silage and Hay • Fertiliser Spreading




Glenn 021 983 734 Ross 021 983 594

Ph: 09 431 6186 Email: battensbybrothers@xtra.co.nz

A picture says it all ...

TODAY'S TECHNOLOGY VERSUS GUM DIGGING DAYS OF OLD!

Waiting at The Kauri Museum's reception Dylan Hannam of Hamilton checks his phone, while Tattie Smith (mannequin) works intently on a piece of kauri gum.



Yoga is back in 2019! ... 'Beyond Yoga'

After a bumpy 2018, thanks to everyone for supporting Kaipara Yoga, yoga is returning in 2019 with a new name "**Beyond Yoga**"- taking the focus deeper than just exercise and postures.

If you want to make your world a bright, free and happy place - this starts within you, not outside you. Yoga is not about losing weight, it's about loving yourself as you are. If you want to lose weight, go for a walk and stop eating so many chocolate biscuits.

The answers to life's problems are simple. We've just been led to believe that things need to

be complex. If you resonate to that truth, come along, first class is free.

Chair Yoga is set to return to Paparoa this February, with classes starting on Tuesday 5th, and Friday 8th at 9.30am at the Sports Pavilion. Still only \$7 per class!

Monday night yoga with Jenny is also returning to Maungaturoto, starting Feb

4th at 6pm in the Centennial Hall. There may be other classes added throughout the year depending on interest.

If you are interested in private sessions (these are limited in number but very cheap in price), get in contact. Transform your inner world to see changes in your outer world!

Jenny 021 114 3370

SKIN IMAGE
PAPAROA - WAIPU

age younger with healthy skin

- ✓ Collagen Induction Therapy
- ✓ LED Light Therapy
- ✓ Eyebrow Feathering
- ✓ Skin / Product analysis
- ✓ Eyeworks & Waxing

(09) 431 6483 or
022 394 1184

Dermatitis a common skin disorder

When it comes to dermatitis (derma = skin, itis = inflammation), there are two main types: allergic contact dermatitis and photo contact dermatitis (this one is not so common).

ALLERGIC CONTACT DERMATITIS

Occurs when the skin develops an allergic reaction after being exposed to a foreign substance. This causes the body to release inflammatory chemicals that can make the skin feel itchy and irritated.

Common causes of allergic contact dermatitis include contact with:

- jewellery made from nickel or gold
- latex gloves
- perfumes or chemicals in cosmetics & skin care products
- battery acid
- bleach
- drain cleaners
- kerosene
- detergents

Allergic contact dermatitis can also occur when the skin comes in contact with soap or even water too often. For example, hairdressers, bartenders, and healthcare workers whose hands are continuously in contact with water and detergents often experience allergic contact dermatitis of the hands.

The most natural way of dealing with the condition



Allergic Contact Dermatitis can be resolved by repairing the skin barrier

Before treatment

After treatment

is to avoid contact with the substances that are causing the dermatitis. However, that is easier said than done and most people resort to steroids or cortisones and lots of oils and moisturisers often without any good results.

Choice of skin care is imperative to supporting dry, scaly and itchy skin caused by allergic contact dermatitis. Emulsifiers, fragrances, colour-

ants, mineral oils and petroleum based substances are the culprits as they tend to dissolve the natural skin lipids leaving the skin lipid dry and even more dehydrated. The tendency is to continue to re-apply more cream to correct the dry skin condition.

This senseless cycle eventually places the skin in a state of imbalance and the skin finds it difficult to self-correct.

Cleansers should be free of surfactants like sodium lauryl sulfate and moisturisers must be free of emulsifiers and contain substances that can repair the skin's outer barrier. The goal is to rebuild the barrier as much as possible.

Nina Quan, Skin Therapist, Skin Image Paparoa - Waipu

Village news

Due to the growth of Skin Image Waipu, Nina Quan has decided to put Skin Image Paparoa and the building up for sale. "I feel very stretched at the moment running two clinics. Something has to give and I'd prefer it not to be my family. I didn't expect Waipu to grow so quickly in such a short time." says Nina.



Since Nina's been in Paparoa, she has built a great clientele with a focus on skin. Skin Image Paparoa was awarded 3rd place for NZ's Best New Clinic in 2017 and 2018.

However, Nina tells us until the building and/or the business is sold, nothing changes. She will continue to see new and existing clients in Paparoa on Tuesdays and Thursdays.

"I'm not going anywhere, I'll continue to practice, just out of one place (Waipu), not two" says Nina.

If you are interested in buying either the building or the existing business, please contact Nina directly (see Skin Image ad above).

FENCING

SPECIALISTS

CALL CHRIS HICKEY ON 027 561 1719 email: fencingspecialists.nz@gmail.com



ALL ASPECTS OF FARM & LIFESTYLE BLOCK FENCING & MAINTENANCE INCLUDING:

- Post & Batten • Entrances
- Post & Rail • Retaining Walls
- Stock Yards • Riparian Lots
- Netting • Subdivision

REX BROWNE CONTRACTING

- Limestone & Metal Cartage
- Truck & Digger Hire
- Farm Roads ◦ House Sites & driveways
- Earthwork & Dams ◦ Wrapped Silage & Hay Cultivation



Maize Silage planting & harvesting

☎ 09 431 7556
☎ 021 720 590

OUT & ABOUT AROUND TOWN

Our condolences go to the Powell family on the death of Kim during January.

We also extend our condolences to the Ball family on the death of Una Ball.

The legendary McSweeney Bros with Marian Burns on fiddle on Saturday 2 March is a Rotary fundraiser for the Dementia Unit project. It's entertainment and dancing reminiscent of the 1960's at the Maungaturoto Community Hall. (See ad below for details.)

Maungaturoto Community Walkway (otherwise known as the walkway round the Rec. Farm, Bickerstaffe Road) has been mowed and posts installed to ensure people can follow the track easily. It's a nice 40-60min farm walk with bush included. Needed: 'Trackies' - active people to walk the track regularly and report any problems. Phone or txt Stella 021 149 0877.

Since Empire's gallery & cafe opened on a Friday initially over the Christmas/New Year period it's proven to be so

popular they are continuing this arrangement for all of summer. Great coffee, fresh daily, locally baked goodies and art, what's not to love!?

A BIG thankyou to everyone involved in making the Paparooa Community Picnic such a great opportunity to spend a sunny afternoon - especially Jocelyn McKenzie who was first and foremost behind the organisation of the day and The Swamp Brothers who provided the great music all afternoon.

Arty Farties Garage Sale funds, with the help of generous donations from the community, helps to grow fruit and vegetables for the foodbanks. It all goes back to the community. Come and check it out Sundays from 9am to 1pm with lots of free (and 10c) items to choose from.

Yoga with Jenny is returning this year. Mondays in Maungaturoto at 6pm, and chair yoga in Paparooa at 9.30am Tues & Fri. Jenny 021 114 3370 (see article pg 17).

Maungaturoto and Districts Rotary Club proudly presents:

The Legendary
McSweeney Bros

Featuring the extraordinary
Marian Burns on Fiddle



Saturday 2nd March 2019 at 8pm Centennial Hall
\$35.00 per person

Bookings contact:

Eileen Parsons, 021 142 0357 or Keith Shadbolt, 021 402 122

Rotary raising funds for the local Dementia Centre
Light refreshments provided

HOOK, LINE & SINKER

It's good fishing at the moment.

You just have to know where to go

... if there's none in one spot then move to another.

They are around and can be found!

You can hook plenty of snapper, a few kahawai and the odd gurnard.

Happy fishing



Tokafest 2019

Tokafest is to be held Saturday February 16, Tokatoka Tavern.

Community inspired, this celebration of music and arts has a stellar lineup of local, national, and international original performers ranging from folk, indie, rock, and alternative, through to hip hop, electronic and circus.

There will be stalls and visual art to add to the atmosphere! Listen to acts from around Kaipara and Northland, plus Australian avant garde 'Blunderbus Jones' and international 'Tourist'.

Camping available close to venue. Call 027 489 6093 for more info or check facebook.



What's Hot

A Kereru chick that fell out of a tree was reunited with it's parents for several days. *Sadly a cat ended the tale - but beautiful video footage was posted on Pest Free Peninsulas Kaipara (FB)*



What's Not



Household rubbish dumped at The Village Green waiting for free disposal.

Definitely not alright!



LANCE KEAY CONTRACTING LTD

- Effluent Pond Cleaning
- Round Bale Hay & Silage
- Ripping & Discing
- Power Harrow & Air Seeder
- Under Sowing
- Gorse/Scrub Mulching
- Conventional Baling

Ph: 09 431 6308
E: lancekeaycontracting@farmside.co.nz

PH: 021 383 908

WHAT'S ON - FEBRUARY 2019

The Paparoa Show Sat 2 Feb, Paparoa Showgrounds, from 9am - see details front page
Burgers & Bangers Sat 9 Feb, Paparoa Farmer's Market - community fundraiser
The Kauri Museum open 7 days, annual passes available for Otamatea residents
Exhibitions: 'Tudor Collins - Man of Many Faces';
 Heritage Christmas Decorations; Heritage Rose Collection;
 Twelve Holiday Hotspots; 'A touch of Lace for every Occasion'
Tokafest 2019 Tokatoka Tavern, Sat Feb16 - see details pg18

REGULAR EVENTS, MEETINGS AND ORGANISATIONS

Anglican Church St Marks 1st, 2nd & 4th Sundays 10am, Hook Road, Paparoa
Ararua Church 10.30am every Sunday, All welcome ph 431 6622
Art Studio, Ruawai Wed 10-12noon ph Frances 439 2554
Arty Farties Thur/Fri/Sun at the "Tile Shed"; Garage sale Sundays 10am to 2pm;
 Beginners Patchwork, Mon 7pm, Te Pahi River Dr. For info: ph Anne 431 6229
Badminton Starting again Term 1.TBA Thurs 7pm, Paparoa Hall,
 \$2 students/\$3 adults ph Pete 431 6822
Crafternoons 1st & 3rd Wed in month, 10.30-4pm, Tinopai Hall ph Jo 431 7219
Exercise to Music Tue 10.30am Paparoa Hall \$5 ph Rose 431 7418
Farmers' Market Every Saturday 9-noon, Village Green. Contact Ruth 021 433 969
Grey Power Last Wed in month, 1pm, Anglican Church Hall, Mgtto
Kaipara Marching Team Weds 4-5.30pm, M'gto, ph Rose Plunkett 431 7418
Library Temporarily closed due to pending Medical Soc building renovations
Line Dancing Thurs 10am-noon Paparoa Hall ph Rose 431 7418
Mainly Music Wed 9.30am Paparoa Comm Church, Carolyn Poyner 4316008
Mahjong twice monthly on a Tuesday. Call Marian Harkness 431 6332.
Maungaturoto Opportunity Shop Open Mon 10-1pm Wed 10-3pm Fri 10-3pm
Otamatea Quilters 1st and 3rd Mon month 10am, Paparoa Hall 09 439 2262
Outdoor Bowls Maungaturoto Green ph Tony 431 6026 or Brian 431 6884
Pahi Hall available for hire ph Sherryl Corbett 431 7127
Paparoa Community Church 10.30am every Sunday, 4 Hook Road 431 7106
Paparoa Garden Circle 2nd Wed of month Marg Bailey secretary. 09 280 9897
Paparoa Hall Functions venue ph Robyn 431 7306 or a/h Loraine 431 7290
Paparoa Library Closed for renovations Opening date to be advised
Paparoa Lions Dinner Meetings 3rd Mon in month 6.30pm, Sports Pavilion
Paparoa Playcentre Tuesday and Thursday 10am-1pm Visitors Welcome
 ph Bianca 431 6730 txt 021 782 456 or ph Jane 431 6148 paparoa@playcentre.org.nz
Paparoa Toy Library Wed 10.30-1pm, Paparoa Comm Church, Hilery 431 7330
Paparoa Volunteer Rural Fire Force (VRFF) 1st and 3rd Tuesday of the month
 6.30pm Depot Rd ph Cohan 431 6668
Plunket Ready Steady Wriggle Mon 10am Sports Pav. Tina Ball 021 033 5128
Qi gong Anamana Studio, Pahi Road. John 021 135 3222
Selwyn Centre Thurs 10am for over 65's, St Marks, Hook Rd, ph 431 8193
Sports Pavilion - Functions Venue Bookings ph Jane Bailey 431 6148
St Mary's Catholic Church 10am Wed, 6pm Sat, Maungaturoto
Table Tennis Tues 7.30pm, Sports Pavilion \$2 Pete 431 6822
Tennis Thurs 4.30pm Primary, 5.15pm High School, 6pm Adults; Fri 9.30am;
 ph Sue 431 6224 or Pete 431 6822
Waka Ama Tue & Thu 5pm, Sun 10am, Pahi Domain, ph Grant 027 474 3856
White Rock Gallery Open at new venue The Kauri Museum 7 days
Yoga: Chair Yoga - Tuesdays & Fridays, 9.30am Paparoa Sports Pavilion \$7/class
 Monday: 6pm Mgtto Centennial Hall: Ph Jenny 021 114 3370

PLEASE UPDATE US WITH YOUR DETAILS: press@paparoa.org.nz PP

Paparoa Press PP **CLASSIFIED ADVERTISING**

Country Blooms Florist Paparoa
 Wednesday to Sunday
 Something special to order?
 Call Raylee 021-2565-893 or
 09 431-6941

Fresh local veges & herbs available at Paparoa Market. Homegrown and sprayfree \$2 packs. Paul Fluler 021 4316 645

Native trees for sale
 Pohutukawas \$5 to \$7.50
 Karakas \$5 to \$7.50
 Nikau Palms \$5 to \$10
 Phone Diane 09 431 6221

Storage Available
 In Paparoa: Secure 20 foot Containers - contact Brian Plunkett 09 4317 418
 Paparoa County Depot Trust

Does your organisation have something interesting to tell the community?
 contact Paparoa Press email preferred
press@paparoa.org.nz
 09 431 7209

LOCAL TIDES for February 2019					
FEBRUARY TIDES - CALCULATED for PAHI-WHAKAPIRAU					
DATE	LOW	HIGH	DATE	LOW	HIGH
1st	3.53pm	9.58am	17th	4.02pm	10.05am
2nd	4.41pm	10.48am	18th	4.58pm	11.01am
3rd	5.24pm	11.29am	19th	5.49pm	11.52am
4th	6.02pm	12.06pm	20th	6.38pm	12.40pm
5th	6.37pm	12.41pm	21st	6.57am	1.27pm
6th	6.49am	1.13pm	22nd	7.43am	2.12pm
7th	7.22am	1.45pm	23rd	8.28am	2.58pm
8th	7.54am	2.18pm	24th	9.14am	3.45pm
9th	8.27am	2.51pm	25th	10.03am	4.34pm
10th	9.02am	3.26pm	26th	10.56am	5.27pm
11th	9.41am	4.06pm	27th	11.58am	6.28pm
12th	10.26am	4.53pm	28th	1.11pm	7.04am
13th	11.22am	5.50pm			
14th	12.31pm	6.56pm			
15th	1.46pm	7.43am			
16th	2.58pm	8.59am			

Community Directory

EMERGENCY: FIRE ■ POLICE ■ AMBULANCE dial 111

COAST TO COAST HEALTH CARE

Maungaturoto Medical Centre: 8am-5pm Mon-Fri 09 431 8576
 Paparoa Clinic: CLOSED TEMPORARILY - FOR BUILDING ALTERATIONS
 For urgent after hours medical service (Wellsford)..... 09 423 8086
DISTRICT NURSE Dargaville Hospital 09 439 3330
 Healthline - 24 hour service..... 0800 611 116
HOSPICE KAIPARA Dargaville Hospital 09 439 3330
KAIPARA DISTRICT COUNCIL Helpline 0800 727 059
 Mangawhai Office..... 0800 100 388
LINKING HANDS Health Shuttle Service, Maungaturoto 09 431 8969
LIONS CLUB PAPAROA Secretary Mark Pilkington09 431 7369
MAUNGATUROTO PHARMACY 09 431 8045
MAUNGATUROTO REST HOME 09 431 8696
NKT RECYCLING Huarau Road 10am - 2pm Mon-Sat....021 08 207 395

OTAMATEA COMMUNITY SERVICES Community House 09 431 9080
PAPAROA LIBRARY Free Membership 09 431 7555
 Closed pending completion of building renovations
 re-opening date to be advised
PAPAROA PLAYCENTRE paparoa@playcentre.org.nz
PAPAROA PLUNKET Clinic 4317340 Cynthia Keay 0276753488
PLUNKET Helpline 0800 933 922
PAPAROA PRIMARY SCHOOL 09 431 7379
PROGRESSIVE PAPAROA INC (PPI)Graham Taylor... 09 431 7209
PARENT PORT Inc. free help for families Linda 09 425 9357
PHYSIOTHERAPY Lyndsay Bargh Mon/Wed/Fri from 8am...431 8576
PODIATRIST / FOOTCARE Jayne Short020 4022 6598
YOUTH & WHANAU FOCUS South Kaipara, Rose 09 431 7418

Summer Fun with Circus Kumarani



ADAM STEVENS
BUILDER

Licensed Building Practitioner

For new builds, alterations and roofing

021 741 363 A/H 09 431 6245

R & D MACDONALD COMPUTERS

Call Ross with your computer problems & repairs
He'll even build a computer to your specifications



Ph 09 431 6221

email: ross@paradisebreeders.co.nz

Painter & Decorator

Tradesmans quality work guaranteed




- Interior
- Exterior
- Spray finishes
- Roofs
- Waterblasting

For your free quote call Mike 021 529 025

The Glass Guy

Broken Window Repairs



Phone Colin 09 431 6595